



MONTHLY MEMBERSHIP PROGRESS REPORT

District 324A1

Results as of: 12/31/2014

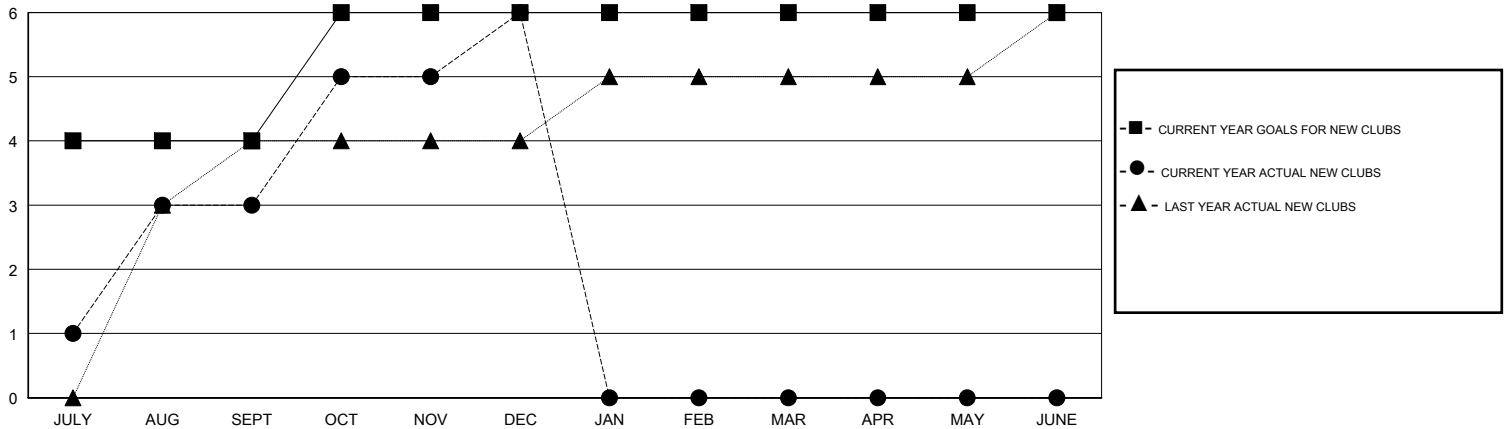
GMT: ER GURUNATHAN

LOCATION INDIA

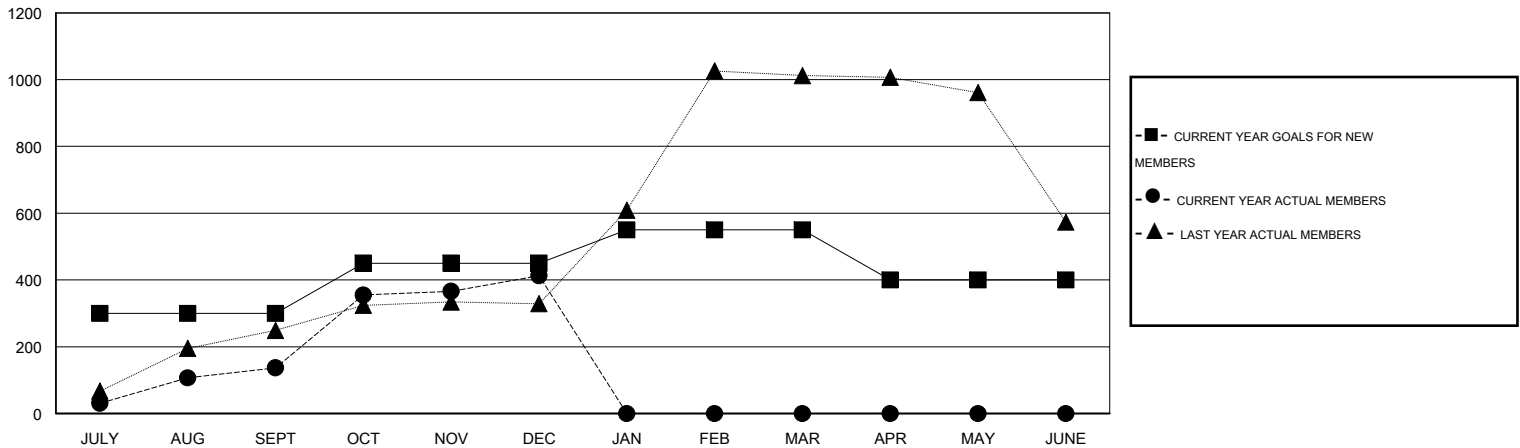
GMT CA 6

| Clubs | | | | | Members | | | | |
|-----------------------|---------------|-----------|---------------|---------------|-----------------------|-----------------|-------------------------------|-----------------|---------------|
| RESULTS FOR 2014-2015 | | | | | RESULTS FOR 2014-2015 | | | | |
| QUARTER | NEW CLUB GOAL | NEW CLUBS | DROPPED CLUBS | NET GAIN/LOSS | QUARTER | NEW MEMBER GOAL | CHARTER AND NEW MEMBERS ADDED | DROPPED MEMBERS | NET GAIN/LOSS |
| JULY/AUG/SEPT | 4 | 3 | 0 | 3 | JULY/AUG/SEPT | 300 | 273 | 136 | 137 |
| OCT/NOV/DEC | 2 | 3 | 2 | 1 | OCT/NOV/DEC | 150 | 414 | 138 | 276 |
| JAN/FEB/MAR | 0 | 0 | 0 | 0 | JAN/FEB/MAR | 100 | 0 | 0 | 0 |
| APR/MAY/JUNE | 0 | 0 | 0 | 0 | APR/MAY/JUNE | -150 | 0 | 0 | 0 |

GOALS AND ACTUAL NEW CLUBS CUMULATIVE



GOALS AND ACTUAL MEMBERS CUMULATIVE



| | | |
|------------------------|---|----------------------------|
| DROPPED CLUBS: 2 | 92 CLUBS OF 160 ADDED 1 OR MORE NEW MEMBERS | <u>GENDER DISTRIBUTION</u> |
| | | MALE 4,793 (65.35%) |
| | | FEMALE 2,541 (34.65%) |
| <u>DROPPED MEMBERS</u> | CLICK HERE FOR HEALTH ASSESSMENT DATA | FAMILY UNIT MEMBERS 1,497 |
| DECEASED 7 | | HEAD OF HOUSEHOLD 711 |
| CLUB CANCELLED 45 | | NON-HEAD OF HOUSEHOLD 786 |
| OTHER 222 | | |
| TOTAL 274 | | |